

8600-MO/ME/VE (5 PLY)

PARTICLE CORE, FOR INTENSIVE USE

- 1 **STILES: 1/8" (3 mm)** hardwood or thick veneer, longitudinally laminated by hot pressing with type 1 structural glue, as per ASTM-D5456-93 (LVL FSC) or laminated strand lumber (LSL), including a **7/8" (22 mm)** piece of hardwood, for a total width of **1 3/16" (30 mm)**:
MO: Manufacturer's choice
ME: Matched with faces
VE: Covered with 1/32" (0.7938 mm) wood veneer, matched with faces
- 2 **TOP AND BOTTOM RAILS: 1 3/16" (30 mm)** in wood or SCL, manufacturer's choice (LVL FSC) or (LSL).
- 3 **CORE:** Solid particleboard. Density of 28-32 lbs per cubic foot. Complies with CSA-0188 and ANSI A208-1 standards (LD-1/LD-2). Available UFF/FSC (LD-2)
- 4 **FACES:** Wood veneer (choice of face veneers; 2 ply plywood), hardboard panel or plastic laminate glued to composite crossband. Available UFF/FSC

LOCK BLOCK: Integrated

GLUE: Type 1 PVA Cross-link (UFF)

INTERIOR USE

REFERENCE FPC-5/FPC-7 (AWI/AWMAC)

WARRANTY: LIFETIME

OPTIONS

| 20 minute fire rating, specify 8620-MO/ME/VE or 8620-MO/ME/VE UFF/FSC

| Wood veneer glued to veneer plywood (3 ply plywood)

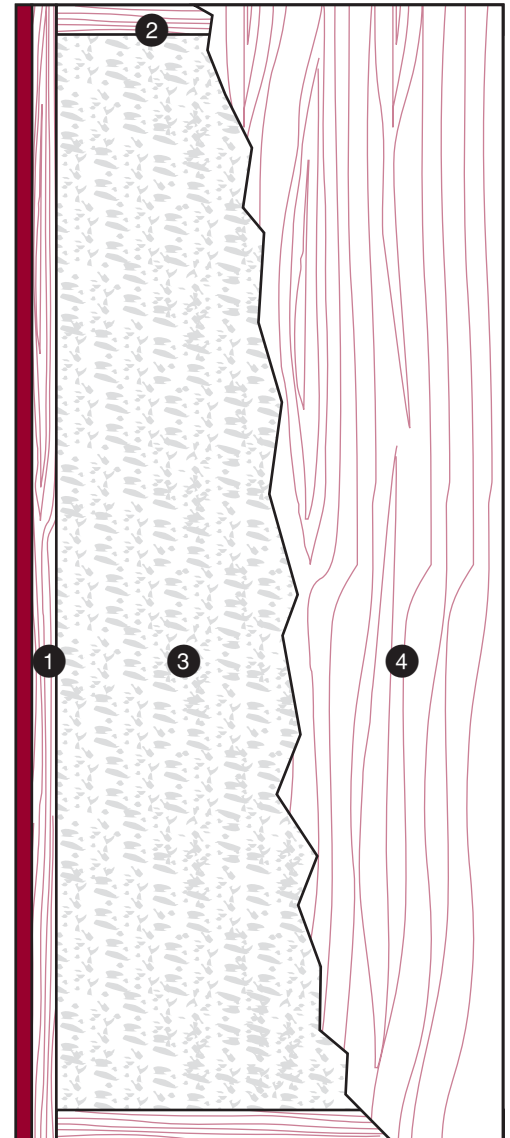
| * To get M.R. 6.0, specify agrifibre core (8620-MO/ME/VE-AF)

| ** To get M.R. 7.0: **Option 1:** specify particleboard core UFF/FSC (8600-MO/ME/VE UFF/FSC) and FSC faces to optimize. **Option 2:** specify agrifibre core (8600-MO/ME/VE-AF) and FSC wood veneer faces, only when M.R. 6.0 is required

| *** To get I.E.Q. 4.4, specify particleboard core UFF/FSC (8600-MO/ME/VE UFF/FSC) or agrifibre core (8600-MO/ME/VE-AF) and UFF or UFF/FSC wood veneer faces

NOTE

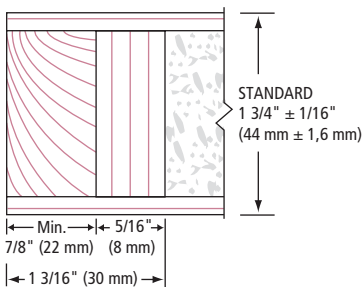
| Dimensions are nominal before trimming



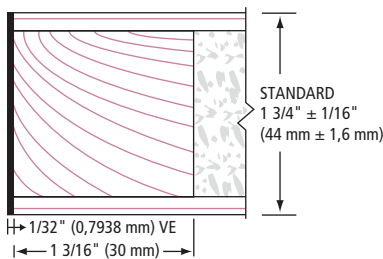
LEED ELIGIBLE CREDITS	M.R.		I.E.Q.				
	4.1	4.2	5.1	5.2	6.0	7.0	4.4 (UFF)
	✓	✓	✓	✓	*	**	***

Standards meet or exceed:
 A.W.S. section 9, October 1, 2009;
 W.D.M.A. 1.S.1A-04
 and CSA 0132.2 90

1 STILES MO/ME



1 STILES VE



2 RAILS

