

PC5-MO/ME/VE (5 PLY)

PARTICLE CORE

1 STILES: Hardwood or structural composite lumber (SCL), including a **7/16" (11 mm)** piece of hardwood, for a total width of **1 3/16" (30 mm)**:

MO: Manufacturer's choice

ME: Matched with faces

VE: SCL covered with 1/32" (0.7938 mm) of wood veneer, matched with faces

Bonded to core

2 TOP AND BOTTOM RAILS: **1 3/16" (30 mm)** in wood or SCL, manufacturer's choice.

Bonded to core

3 CORE: Solid particleboard. Density of 28 32 lbs per cubic foot. Complies with CSA 0188 and ANSI A208 1 standards (LD 1/LD 2). Available UFF/FSC LD 2.

4 FACES: Wood veneer (choice of face veneers; 2 ply plywood), hardboard panel or plastic laminate glued to composite crossband, available UFF/FSC depending on choice.

LOCK BLOCK: Integrated

GLUE: Type1 PVA Cross link (UFF)

INTERIOR USE

WARRANTY: LIFETIME FSC wood veneer faces

OPTIONS

| For 3 ply plywood, specify PC7 MO or PC7 ME UFF/FSC or PC7 VE/AF

| 20 minute fire rating, specify PC520/PC720 MO or PC520/PC720 ME or PC520/PC720 VE

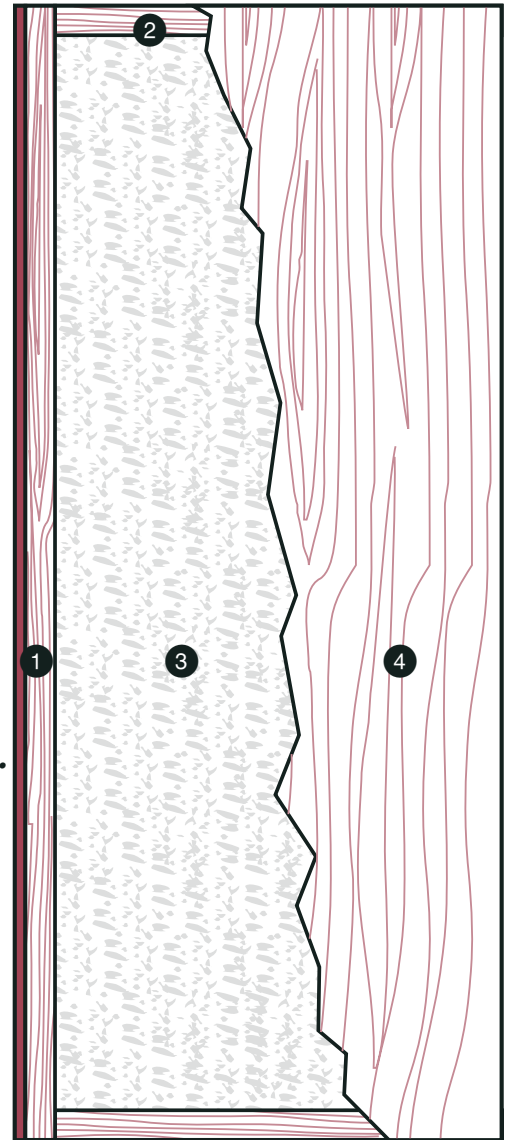
| * To get M.R. 6.0, specify agrifibre core (PC5 MO AF • PC5 ME AF • PC5 VE AF)

| ** To get M.R. 7.0. **Option 1:** specify special particleboard core UFF/FSC (PC5 MO UFF/FSC • PC5 ME UFF/FSC • PC5 VE UFF/FSC). Specify FSC faces to optimize. **Option 2:** specify agrifibre core with FSC faces only when M.R. 6.0 is also required

| *** To get I.E.Q. 4.4, specify special particleboard core UFF/FSC (PC5 MO UFF/FSC • PC5 ME UFF/FSC • PC5 VE UFF/FSC) or agrifibre core (PC5 MO AF • PC5 ME AF • PC5 VE AF) and UFF or UFF/FSC faces

NOTE

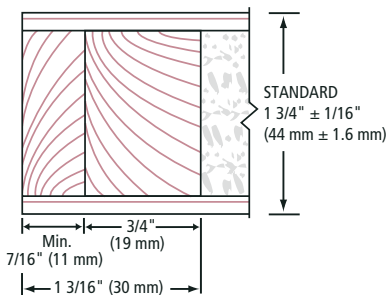
| Dimensions are nominal before trimming.



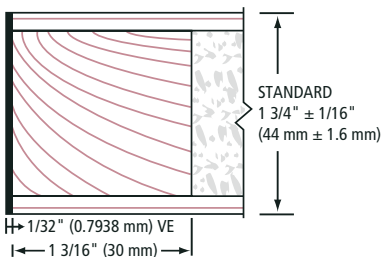
| | | | | | | | |
|------------------------------------|------|-----|--------|-----|-----|-----|-----------|
| LEED ELIGIBLE CREDITS | M.R. | | I.E.Q. | | | | |
| | 4.1 | 4.2 | 5.1 | 5.2 | 6.0 | 7.0 | 4.4 (UFF) |
| | ✓ | ✓ | ✓ | ✓ | * | ** | *** |

Standards meet or exceed:
AWS section 9, Octobre 1, 2009,
W.D.M.A. 1.S.1A 04 and
CSA 0132.2 90

1 STILES MO/ME



1 STILES VE



2 RAILS

