

PC5-MO/ME/VE (5 PLY)

PARTICLE CORE FOR INTENSIVE USE

1 STILES: Hardwood or structural composite lumber (SCL), including a **7/16" (11 mm)** piece of hardwood, for a total width of **1 3/16" (30 mm)**:

MO: Manufacturer's choice

ME: Matched with faces

VE: SCL covered with 1/32" (0.7938 mm) of wood veneer, matched with faces

Bonded to core

2 TOP AND BOTTOM RAILS: **1 3/16" (30 mm)** in wood or SCL, (LVL FSC) or laminated strand lumber (LSL), manufacturer's choice. **Bonded to core**

3 CORE: Solid particleboard. Density of 28-32 lbs per cubic foot. Complies with CSA-0188 and ANSI A208-1 standards (LD-1/LD-2). Available UFF/FSC (LD-2)

4 FACES: Wood veneer (choice of face veneers; 2 ply plywood), hardboard panel or plastic laminate glued to composite crossband. Available UFF/FSC

LOCK BLOCK: Integrated

GLUE: Type1 PVA Cross-link (UFF)

INTERIOR USE

WARRANTY: LIFETIME

OPTIONS

| For 3 ply plywood, specify PC7-MO/ME/VE (7 ply door)

| 20 minute fire rating, specify PC520/PC720-MO/ME/VE

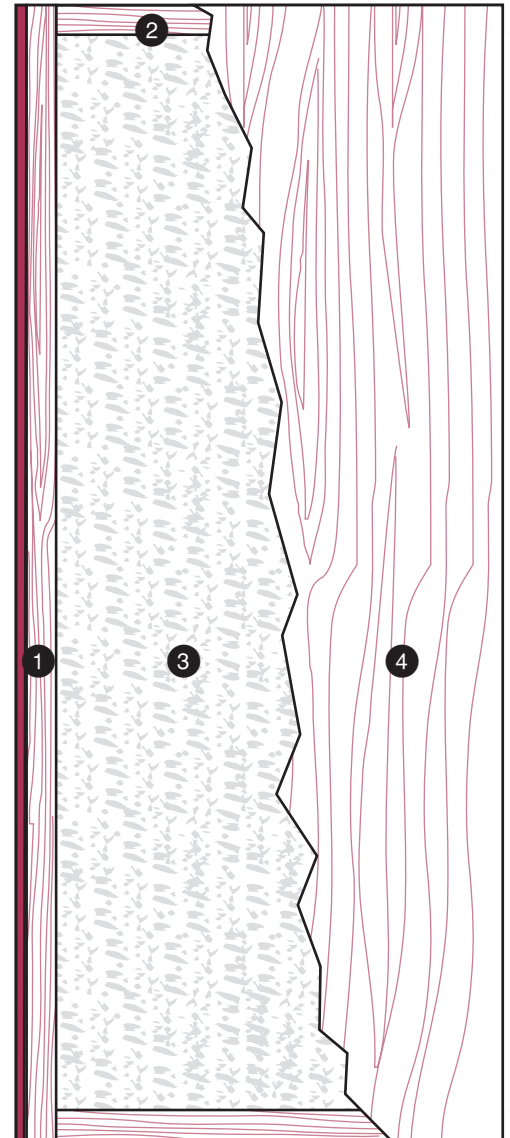
| * To get M.R. 6.0, specify agrifibre core (PC5-MO/ME/VE-AF)

| ** To get M.R. 7.0: **Option 1:** specify particleboard core UFF/FSC (PC5-MO/ME/VE UFF/FSC) and FSC faces to optimize. **Option 2:** specify agrifibre core (PC5-MO/ME/VE-AF) and FSC wood veneer faces, only when M.R. 6.0 is also required

| *** To get I.E.Q. 4.4, specify particleboard core UFF/FSC (PC5-MO/ME/VE UFF/FSC) or agrifibre core (PC5-MO/ME/VE-AF) and UFF or UFF/FSC wood veneer faces

NOTE

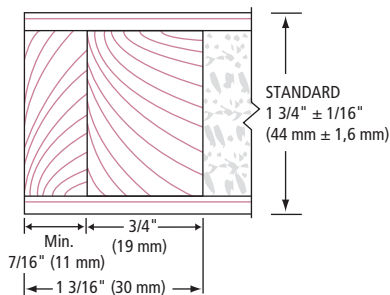
| Dimensions are nominal before trimming



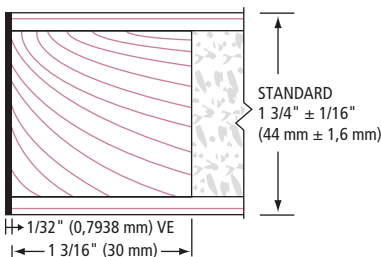
LEED ELIGIBLE CREDITS	M.R.		I.E.Q.				
	4.1	4.2	5.1	5.2	6.0	7.0	4.4 (UFF)
	✓	✓	✓	✱	✱✱	✱✱✱	✱✱✱

Standards meet or exceed:
A.W.S. section 9, October 1, 2009;
W.D.M.A. 1.S.1A-04
and CSA 0132.2 90

1 STILES MO/ME



1 STILES VE



2 RAILS

