

5045/60/90-MO/VE NEUTRAL PRESSURE (5 PLY)

45-60-90 MINUTE FIRE-RESISTANT DOOR, MINERAL CORE FOR MODERATE USE

- 1 STILES:** Special construction compliant with W/H label requirements. High-density mineral and untreated hardwood (minimum of 3/4"/19 mm):
MO: Manufacturer's choice
VE: Covered with 1/32" (0.7938 mm) of wood veneer, matched with faces
Bonded to core
- 2 TOP AND BOTTOM RAILS:** Special construction compliant with W/H label requirements. Mineral or untreated hardwood, manufacturer's choice (minimum of 1 3/8" (3 mm)).
Bonded to core
- 3 CORE:** Non-combustible mineral
- 4 FACES:** Wood veneer (choice of face veneers; 2 ply plywood), hardboard panel or plastic laminate glued to composite crossband. Available UFF/FSC

GLUE: Type 1 PVA Cross-link (UFF)

MAXIMUM DIMENSIONS: 4' x 10' (single), 8' x 9' (double)

NOTE: Max. 1/2" (13 mm) cut allowed at bottom of door upon installation (see NFPA 80)

INTERIOR USE

WARRANTY: LIFETIME

For technical information, please consult our "5045/60/90 Technical Specification" sheet

OPTIONS

Positive pressure available (PP) or (5045/60/90-MO/VE (PP)

Hardware reinforcements

Wood veneer glued to veneer plywood (3 ply plywood)

** To get M.R. 7.0, specify FSC wood veneer faces

*** To get I.E.Q. 4.4, specify UFF or UFF/FSC wood veneer faces

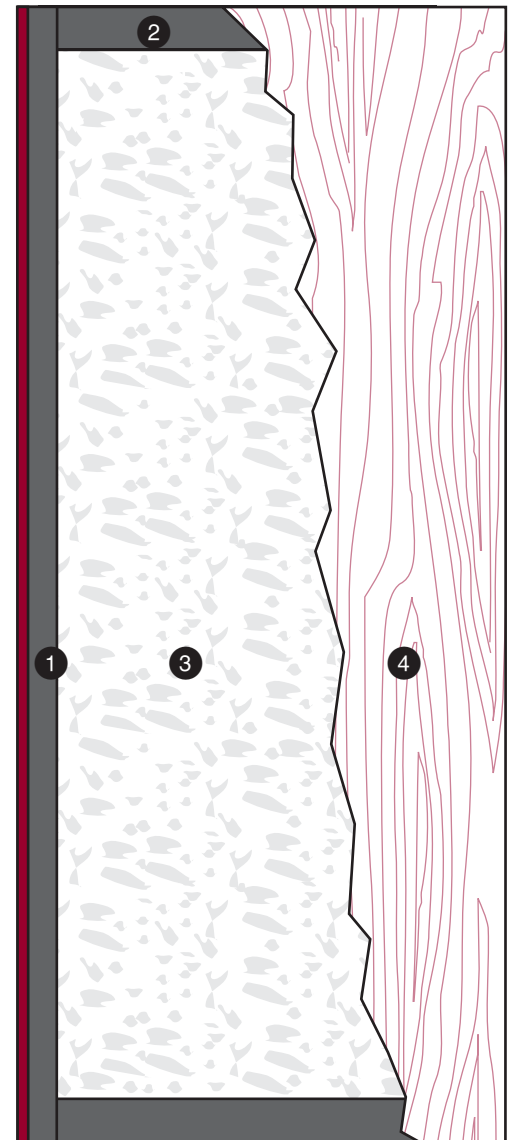
WARNING

Pre-machining must be done in factory or by an authorized distributor in order to maintain our warranty and comply with W/H requirements (see NFPA 80)

Certain applications may require reinforcement

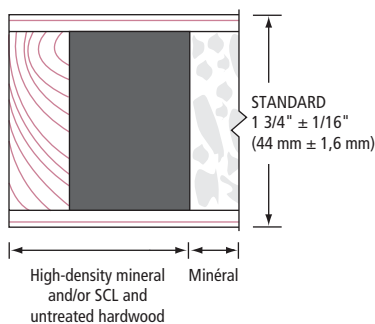
NOTE

Dimensions are nominal before trimming

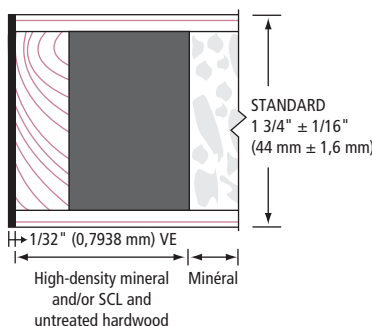


LEED ELIGIBLE CREDITS	M.R.		I.E.Q.		Standards meet or exceed: A.W.S. section 9, October 1, 2009; W.D.M.A. 1.S.1A-04 and CSA 0132.2 90		
	4.1	4.2	5.1	5.2	6.0	7.0	4.4 (UFF)
						**	***

1 STILES MO



1 STILES VE



2 RAILS

