

7600-ME

ULTRA HEAVY-DUTY CONSTRUCTION, 3 PLY LVL CORE FOR HIGH IMPACT INTERIOR USE

- ❶ **STILES:** 7/8" (22 mm) hardwood stiles matched with faces. **Bonded to core**
- ❷ **TOP AND BOTTOM RAILS:** Integrated
- ❸ **CORE:** 3 ply, with 2 vertical plies composed of 1/8" (3 mm) thick veneer, longitudinally laminated by hot pressing with type 1 structural glue, as per ASTM-D5456-93 (LVL FSC), with horizontal crossbanding of the same material. LVL is **FSC Certified** (UFF)
- ❹ **FACES:** Wood veneer (choice of face veneers; 2 ply plywood), hardboard panel or plastic laminate glued to composite crossband. Cold pressing. Available UFF/FSC

GLUE: Type 1 PVA Cross-link (UFF)

WARRANTY: LIFETIME

TEST OF IMPACT: • ASTM-476 against break in (level reached, Grade 40)
• ASTM-1450 (2" thick) for penitentiary (Level 4)

OPTIONS

- | 20 minute fire rating on 1 3/4" (44 mm) door or more, specify 7620-ME
- | Wood veneer glued to veneer plywood (3 ply plywood)
- | Special high impact wood or steel moulding for openings
- | * To optimize M.R. 7.0, specify FSC wood veneer faces
- | *** To get I.E.Q. 4.4, specify UFF or UFF/FSC wood veneer faces

NOTE

| Dimensions are nominal before trimming



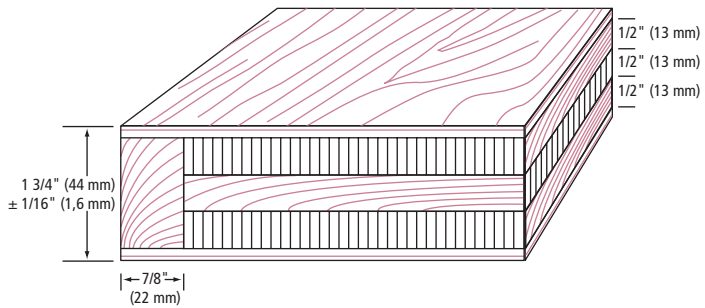
HIGH IMPACT



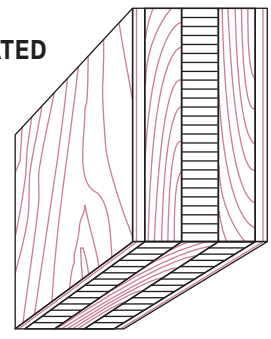
LEED ELIGIBLE CREDITS	M.R.						I.E.Q. 4.4 (UFF)
	4.1	4.2	5.1	5.2	6.0	7.0	
✓	✓	✓	✓	✓	✓	✓*	***

Standards meet or exceed:
A.W.S. section 9, October 1, 2009;
W.D.M.A. 1.S.1A-04
and CSA 0132.2 90

❶ STILES ME



❷ RAILS INTEGRATED



Rev. JUNE 1, 2010 (cp)