

8500-ME (5 PLY)

PARTICLE CORE, ULTRA HEAVY-DUTY, ANTI-WARPING CONSTRUCTION FOR INTENSIVE USE

- ❶ **STILES:** 1/8" (3 mm) thick veneer, longitudinally laminated by hot pressing with type 1 structural glue, as per ASTM D5456 93 (LVL FSC), including a 7/8" (22 mm) piece of hardwood, matched with faces, for a total width of 4 3/16" (107 mm).
- ❷ **TOP AND BOTTOM RAILS:** 1/8" (3 mm) thick veneer, longitudinally laminated by hot pressing with type 1 structural glue, as per ASTM D5456 93 (LVL FSC) or laminated strand lumber (LSL), for a total width of 3 5/16" (85 mm).
- ❸ **CORE:** Solid particleboard. Density of 28 32 lbs per cubic foot. Complies with CSA 0188 and ANSI A208 1 standards (LD 1/LD 2). Available UFF/FSC LD 2.
- ❹ **FACES:** Wood veneer (choice of face veneers; 2 ply plywood), hardboard panel or plastic laminate glued to composite crossband. Available UFF/FSC, depending on choice.

LOCK BLOCK: Integrated

GLUE: Type 1 PVA Cross link (UFF)

INTERIOR USE

WARRANTY: LIFETIME

OPTIONS

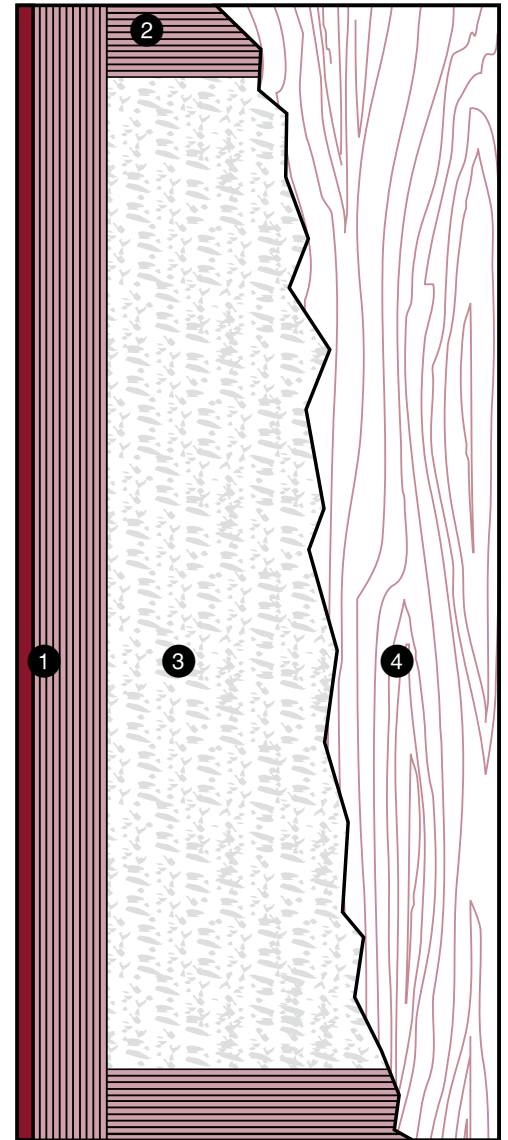
- | 20 minute fire rating, specify 8520 ME, 8520 ME UFF/FSC ou 8520 ME/AF
- | Wood veneer glued to veneer plywood (3 ply plywood)
- | Autonomy door available, specify 8513 ME, 8513 ME UFF/FSC or 8513 ME AF
- | * To get M.R. 6.0, specify agrifibre core (8500 ME AF)
- | ** To get M.R. 7.0. **Option 1:** specify special particleboard core UFF/FSC (8500 ME UFF/FSC). Specify FSC faces to optimize. **Option 2:** specify agrifibre core with FSC faces only when M.R. 6.0 is also required
- | *** To get I.E.Q. 4.4, specify special particleboard core (8500 ME UFF/FSC) or agrifibre core (8500 ME AF) and UFF or UFF/FSC faces

NOTE

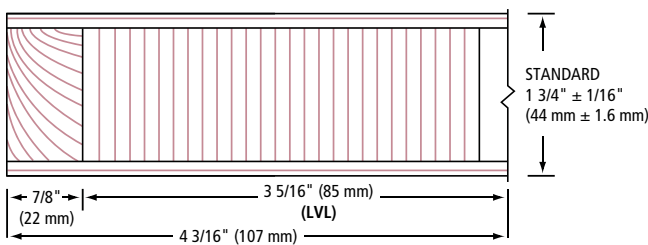
Dimensions are nominal before trimming.

LEED ELIGIBLE CREDITS	M.R.		I.E.Q.				
	4.1	4.2	5.1	5.2	6.0	7.0	4.4 (UFF)
	✓	✓	✓	✓	*	**	***

Standards meet or exceed:
AWS section 9, Octobre 1, 2009,
W.D.M.A. 1.S.1A 04 and
CSA 0132.2 90



❶ STILES ME



❷ RAILS

