



5045/60/90-MO/VE NEUTRAL PRESSURE (5 PLY)

45-60-90 MIN FIRE-RESISTANT DOOR, MINERAL CORE FOR INTENSIVE USE

1 STILES: Special construction compliant with W/H label requirements. High-density mineral and/or untreated hardwood (minimum of **3/4" (19 mm)**):

MO: Manufacturer's choice.

VE: Covered with 1/32" (0.7938 mm) of wood veneer, matched with faces.

Bonded to core.

2 TOP AND BOTTOM RAILS: Special construction compliant with W/H label requirements. Mineral and/or untreated hardwood, manufacturer's choice (minimum of **1 3/8" (3 mm)**). **Bonded to core.**

3 CORE: Non-combustible mineral. **Neutral FSC (NAUF).**

4 FACES: Wood veneer (choice of face veneers; 2 ply plywood), hardboard panel or plastic laminate glued to composite cross-band. Available NAUF/FSC.

GLUE: Type 1 PVA Cross-link (NAUF).

MAXIMUM DIMENSIONS: single - 4' x 10'; double - 8' x 9'.

NOTE: Max. 1/2" (13 mm) cut allowed at bottom of door upon installation (see NFPA 80).

INTERIOR use

WARRANTY: Lifetime

For technical information, please consult our "5045/60/90 Technical Specification" sheet.

OPTIONS

| **Positive pressure available (PP) or (5045/60/90-MO/VE (PP)).**

| *Hardware reinforcements.*

| *Wood veneer glued to plywood veneer (3 ply plywood) (7 ply door).*

| *Available **STC 32, 35 or 40** according to sound rating hardware configuration.*

| ** M.R. 5.1/5.2 according to project localisation. Contact us.*

| *** To get M.R. 7.0, specify FSC faces.*

| **** To get IEQ. 4.4, specify NAUF or NAUF/ FSC faces.*

| *o Subject to evaluation. Contact us.*

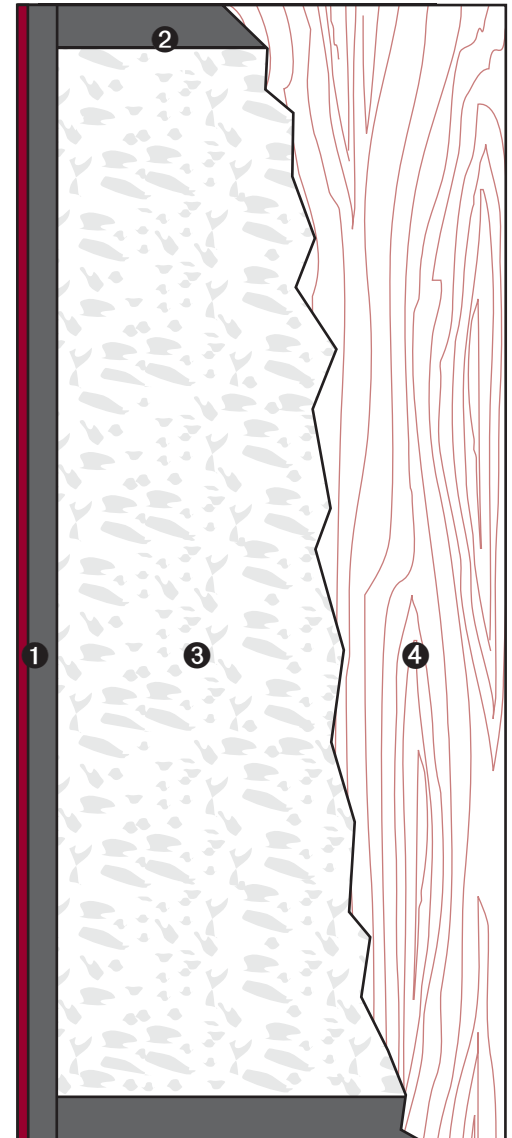
WARNING

| *Pre-machining must be done in factory or by an authorized distributor in order to maintain our warranty and comply with W/H requirements (see NFPA 80).*

| *Certain applications may require reinforcement. Pilot holes required.*

NOTE

| *Dimensions are nominal before trimming.*

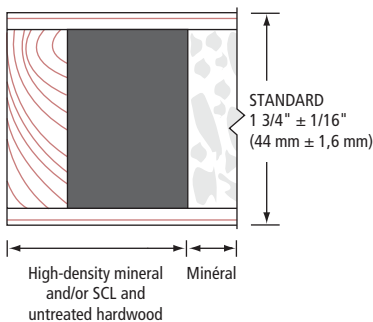


FSC® certified products available on request.

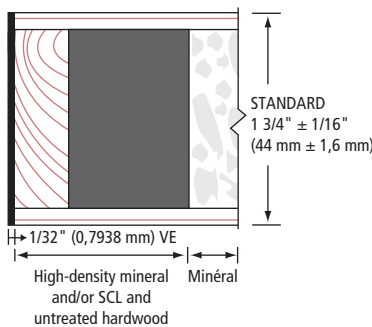


LEED Eligible Credits	MR		IEQ		ID 1	PR 2	Standards meet or exceed: A.W.S. section 9, October 1, 2009; W.D.M.A. 1.S.1A-2013		
	3	4	5	6	7	3.2		4.4	mode 2
	✓		*		**	o	***	o	o

1 STILES MO



1 STILES VE



2 RAILS

