

**PARTICLE CORE**  
(Heavy Duty)

**8600-MO/ME/VE**  
**8620-MO/ME/VE** (5 ply)

**FOR INTENSIVE USE**

- 1 STILES:** 1/8" (3 mm) hardwood or thick veneer, longitudinally laminated by hot pressing with type 1 structural glue, (LVL) or laminated strand lumber (LSL), might include a 7/8" (22 mm) piece of hardwood, for a total width of 1 3/16" (30 mm) :  
**MO:** Manufacturer's choice.  
**ME:** Matched with faces.  
**VE:** Covered with 1/32" (0.7938 mm) wood veneer, matched with faces.
- 2 TOP AND BOTTOM RAILS:** 1 3/16" (30 mm) in wood or SCL, manufacturer's choice (LVL) or (LSL).
- 3 CORE:** Solid particleboard. Density of 28-32 lbs per cubic foot.
- 4 FACES:** Wood veneer (choice of face veneers; 2 ply plywood), hardboard panel or plastic laminate glued to composite crossband.

**LOCK BLOCK:** Integrated.

**GLUE:** Type 1 PVA Cross-link.

**INTERIOR** use

**WARRANTY:** Lifetime

**NOTE**

Dimensions are nominal before trimming.

**OPTIONS**

20 min fire rating, specify 8620-MO/ME/VE

**SOUND RATED OPTION**

Available 30dB depending on configuration of soundproofing hardware.

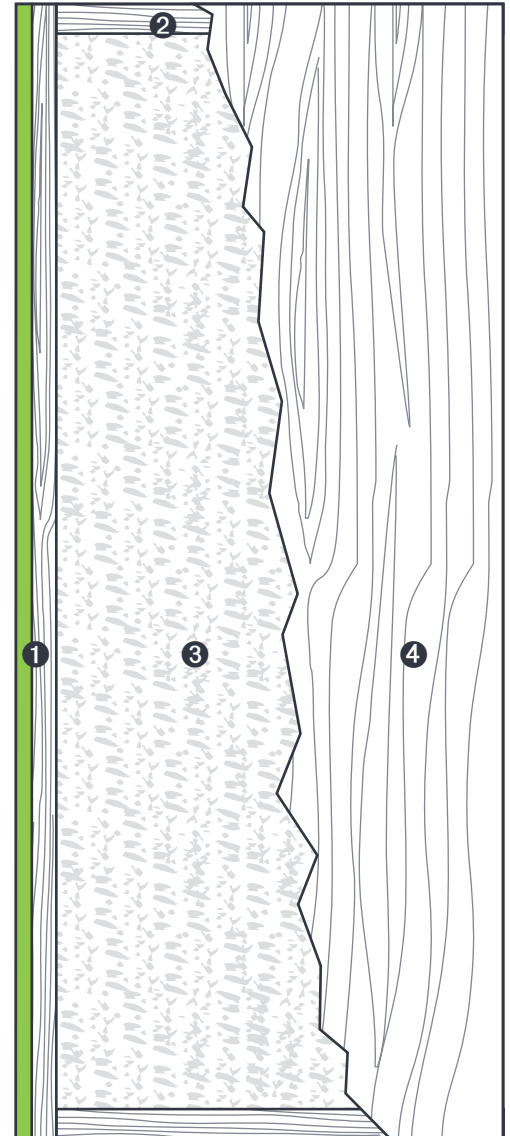
For optimization, see our soundproof construction.

**LEED CONTRIBUTION OPTIONS**

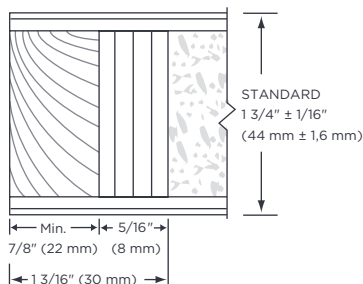
- EPD
- Recycled content
- FSC
- NAUF or ULEF (on request)

**PERFORMANCE MEASUREMENT**

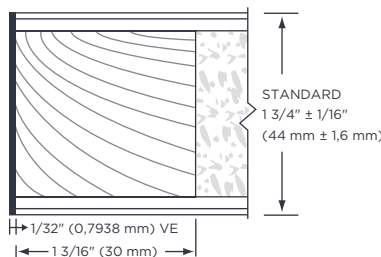
- ANSI/WDMA 1.S.1A
- ANSI A208-1 (particle board LD-1/LD2)
- ASTM-D1037 and D198-98 (LSL)
- ASTM-D5456-93 (LVL)
- AWS
- Intertek WH-ETL
- NFPA 80



**1 STILES MO/ME**



**1 STILES VE**



**2 RAILS**

