

PARTICLE CORE (Extra Heavy Duty)

8500-ME / 8520-ME (5 ply)

ANTI-WARPING CONSTRUCTION FOR INTENSIVE USE

- 1 **STILES:** 1/8" (3 mm) thick veneer, longitudinally laminated by hot pressing with type 1 structural glue, (LVL), including a 7/8" (22 mm) piece of hardwood, matched with faces, for a total width of 4 3/16" (107 mm).
- 2 **TOP AND BOTTOM RAILS:** 1/8" (3 mm) thick veneer, longitudinally laminated by hot pressing with type 1 structural glue, (LVL), or laminated strand lumber (LSL) for a total width of 3 5/16" (85 mm).
- 3 **CORE:** Solid particleboard. Density of 28-32 lbs per cubic foot.
- 4 **FACES:** Wood veneer (choice of face veneers; 2 ply plywood), hardboard panel or plastic laminate glued to composite crossband.

LOCK BLOCK: Integrated.

GLUE: Type 1 PVA Cross-link.

INTERIOR use

WARRANTY: Lifetime

NOTE

Dimensions are nominal before trimming.

OPTIONS

20 min fire rating, specify 8520-ME,

SOUND RATED OPTION

Available 30dB depending on configuration of soundproofing hardware.

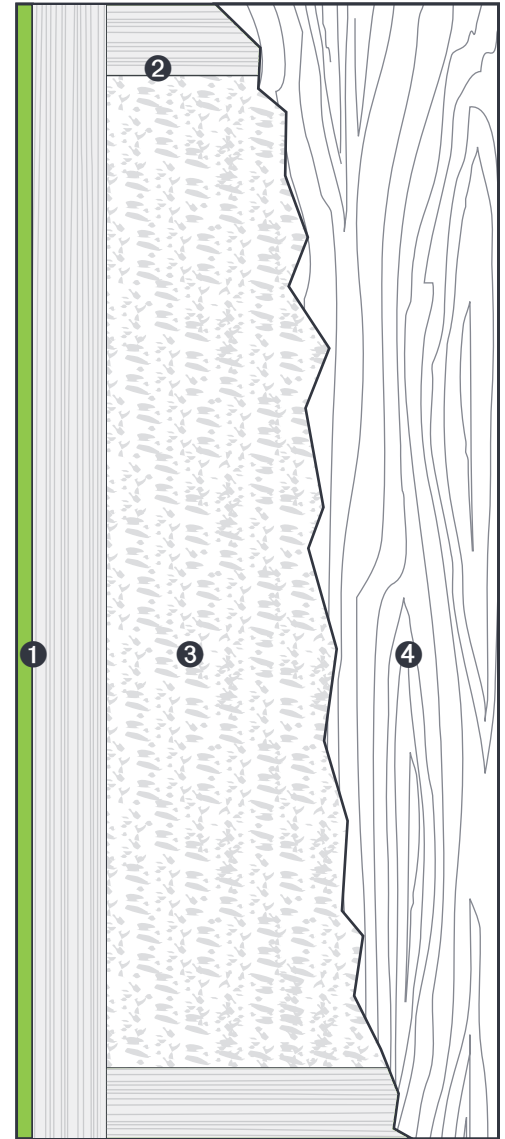
For optimization, see our soundproof construction.

LEED CONTRIBUTION OPTIONS

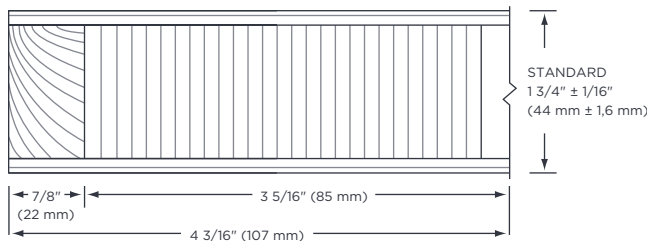
- EPD
- Recycled content
- FSC
- NAUF or ULEF (on request)

PERFORMANCE MEASUREMENT

- ANSI/WDMA 1.S.1A
- ANSI-208-1 (particle board LD-1/LD2)
- ASTM-D1037 and D198-98 (LSL)
- ASTM-D5456-93 (LVL)
- AWS
- Intertek WH-ETL
- NFPA 80



1 STILES ME



2 RAILS

