

# HOLLOW

(Extra Heavy Duty)

## 9300-ME (5 ply)

### FOR INTENSIVE USE

- 1 STILES:** 3 5/16" (85 mm) laminated strand lumber (LSL), including a 7/8" (22 mm) piece of hardwood, matched with faces, for a total width of 4 3/16" (107 mm). These wood components are bonded with type 1 water-resistant adhesive.
- 2 TOP AND BOTTOM RAILS:** 3 5/16" (85 mm) laminated strand lumber (LSL). These wood components are bonded with type 1 water-resistant adhesive.
- 3 CORE:** 4 3/4" (120 mm) honeycomb. (100% recycled).
- 4 FACES:** Wood veneer (choice of face veneers; 2 ply plywood), hardboard panel or plastic laminate glued to composite crossband.

**LOCK BLOCK:** Integrated.

**GLUE:** Type 1 PVA Cross-link.

**INTERIOR** use

**WARRANTY:** Lifetime

**NOTE**

| Dimensions are nominal before trimming.

**OPTIONS**

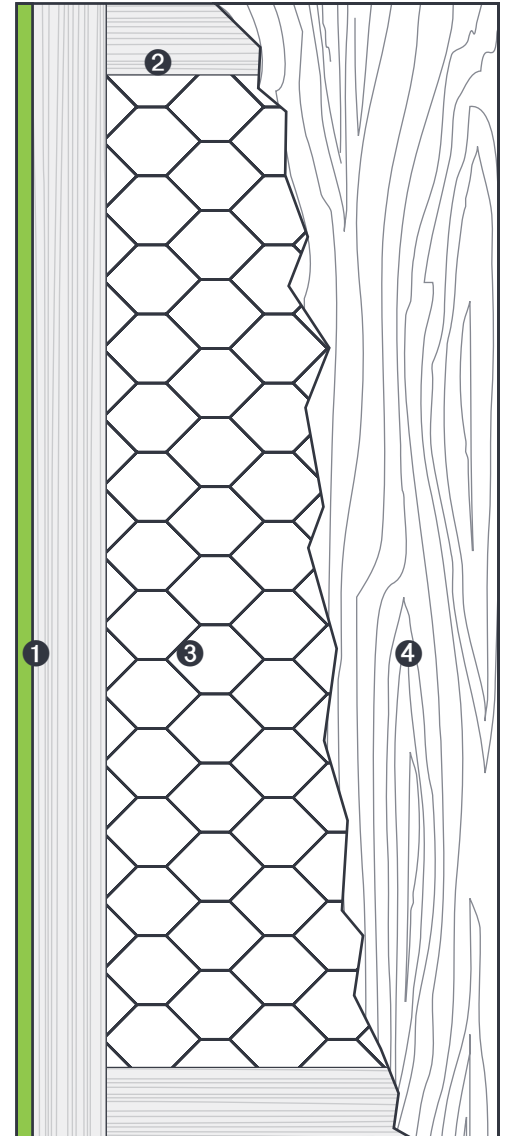
| STC sound rating not available.

**LEED CONTRIBUTION OPTIONS**

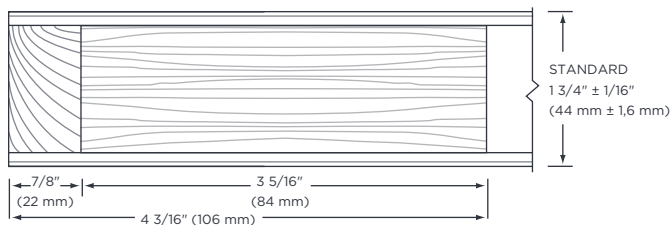
- | Recycled content
- | FSC (on request)
- | NAUF or ULEF (on request)

**PERFORMANCE MEASUREMENT**

- | ANSI/WDMA 1.S.1A
- | ASTM-D1037 and 198-98 (LSL)
- | AWS



**1 STILES ME**



**2 RAILS**

