

PARTICLE CORE (Extra Heavy Duty)

8300-ME / 8320-ME (5 ply)

FOR INTENSIVE USE

- 1 STILES:** 3 5/16" (85 mm) laminated strand lumber (LSL), including a 7/8" (22 mm) piece of hardwood, matched with faces, for a total width of 4 3/16" (107 mm). These wood components are bonded with type 1.
- 2 TOP AND BOTTOM RAILS:** 3 5/16" (85 mm) laminated strand lumber (LSL). These wood components are bonded with type 1 water-resistant adhesive.
- 3 CORE:** Solid particleboard. Density of 28-32 lbs per cubic foot.
- 4 FACES:** Wood veneer (choice of face veneers; 2 ply plywood), hardboard panel or plastic laminate glued to composite crossband.

LOCK BLOCK: Integrated.

GLUE: Type 1 PVA Cross-link.


INTERIOR use

WARRANTY: Lifetime

NOTE

| Dimensions are nominal before trimming.

OPTIONS

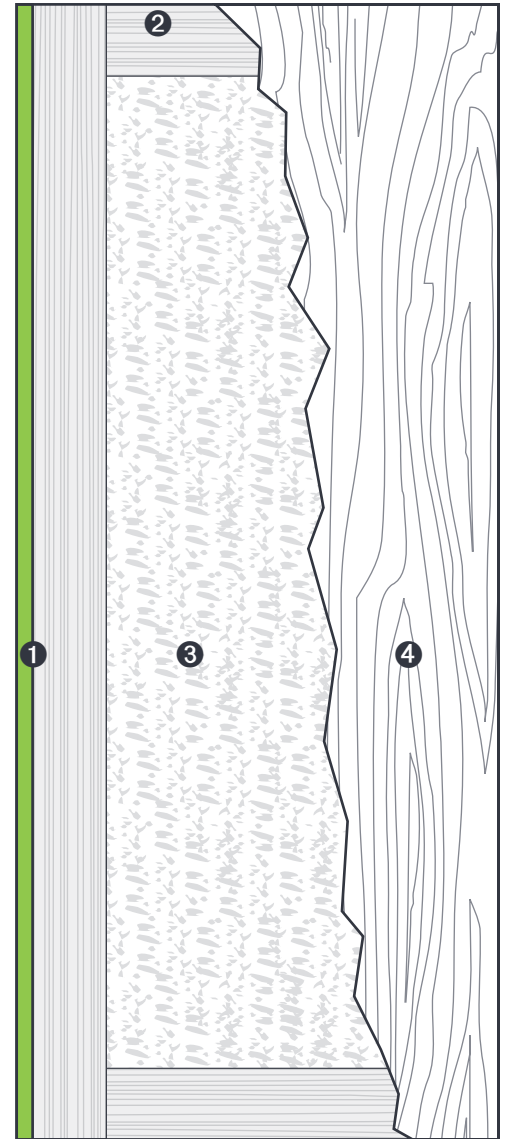
- |  20 min fire rating, specify 8320-ME,
- | STC sound rating not available.

LEED CONTRIBUTION OPTIONS

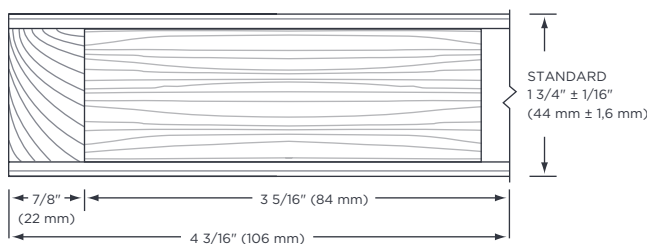
- | EPD
- | Recycled content
- | FSC
- | NAUF or ULEF (on request)

PERFORMANCE MEASUREMENT

- | ANSI/WDMA 1.S.1A
- | ANSI-208-1 (particle board LD-1/LD2)
- | ASTM-D1037 and D198-98 (LSL)
- | AWS
- | Intertek WH-ETL
- | NFPA 80



1 STILES ME



2 RAILS

