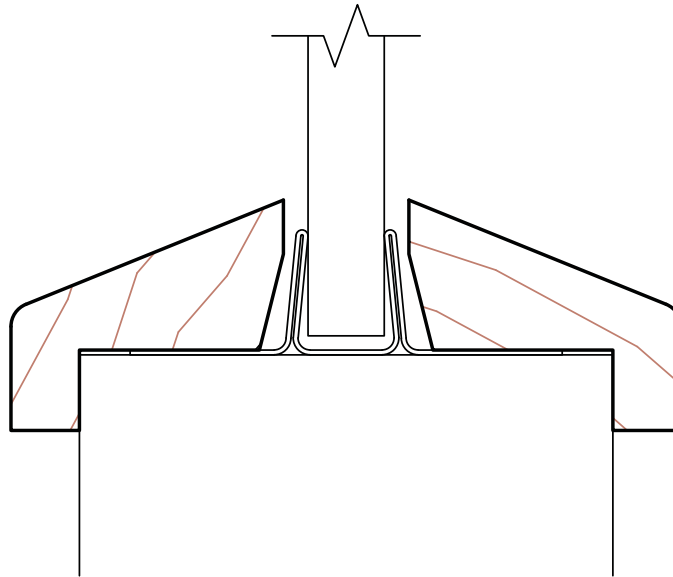


#CF - WOOD MOULDING - FIRE-RESISTANT 20 MIN. 

Manufacturer's choice of hardwood or matched to the face upon request.

Standard models

Oak and birch in stock



Wood mouldings

Wood moulding (birch, oak). Cutouts must be a minimum of 5" (127 mm) from the sides or top or bottom of the door and/or from other cutouts. Maximum dimension per vision panel or door: 1,296 sq. in. Maximum vision panel height: 40" or 54" (1,016 mm or 1,371 mm) if the width does not exceed 24" (610 mm).

Before mounting glass and mouldings, the metal brackets must be positioned on the edges of the glass at a minimum of 6" (152 mm) from each corner and with a minimum of 12" (304 mm) c/c for the others. A minimum of 2 brackets required on vertical sides of glass. Requires certified 1/4" (6 mm) brocade glass or certified 1/4" (6 mm) clear glass. Install 1/16" (1.6 mm) Tremco glazing tape between the light and the mouldings (see diagram).

Mount mouldings using 1 1/2" (38 mm) finishing nails at 8" (203 mm) c/c with a minimum of two nails per moulding.

