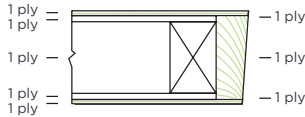
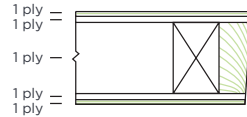
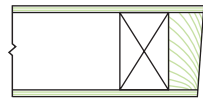


TECHNICAL DETAILS

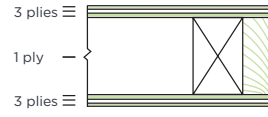
DOOR EDGE CONSTRUCTION AND TYPES



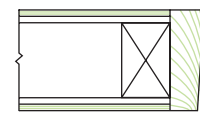
No. 1 "Edge" Type D
5-ply door. No visible
reinforcement ply (blind edge)



No. 2 "Edge" Type A (Standard)
5-ply door. 1 visible
reinforcement ply

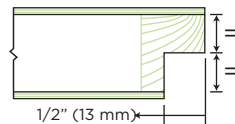


No. 3 "Edge" Type A (Optional)
7-ply door. 3 visible ply on
each side of the core

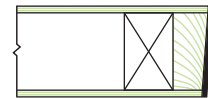


No. 4 "Edge" Type F
Hardwood face applied to the edge

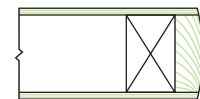
Standard Baillargeon edge
on both sides. Clearance 1/8"
over 2" (3 mm over 51 mm)
Standard lock and hinge side



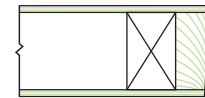
Notched top door rail
or impost bottom
Upon request



No. 5 "Edge" Type B
5 or 7 ply veneer edge (VE).
Recovered with 1/32" wood
veneer edge



Radius
For double-acting doors 1 5/32"
(29.4 mm) standard curve.



Type C
Recovered with plastic
laminate edge

Other models: available upon request or to specifications.

CONSTRUCTION DEFINITIONS :

WOOD FACE:

- 5-PLY consists of a center core on which is applied to each side a wood veneer or composite cross band with a face veneer applied over the cross band.
- 7-PLY consists of a center core on which is applied to each side 3-ply face skins.

FIBERBOARD-FACE:

- 3-PLY consists of a core on with a fiberboard face applied over both side of the core.

HPDL-FACE:

- 5-PLY consists of a wood veneer or composite cross band applied over the core before application of the face laminate.